

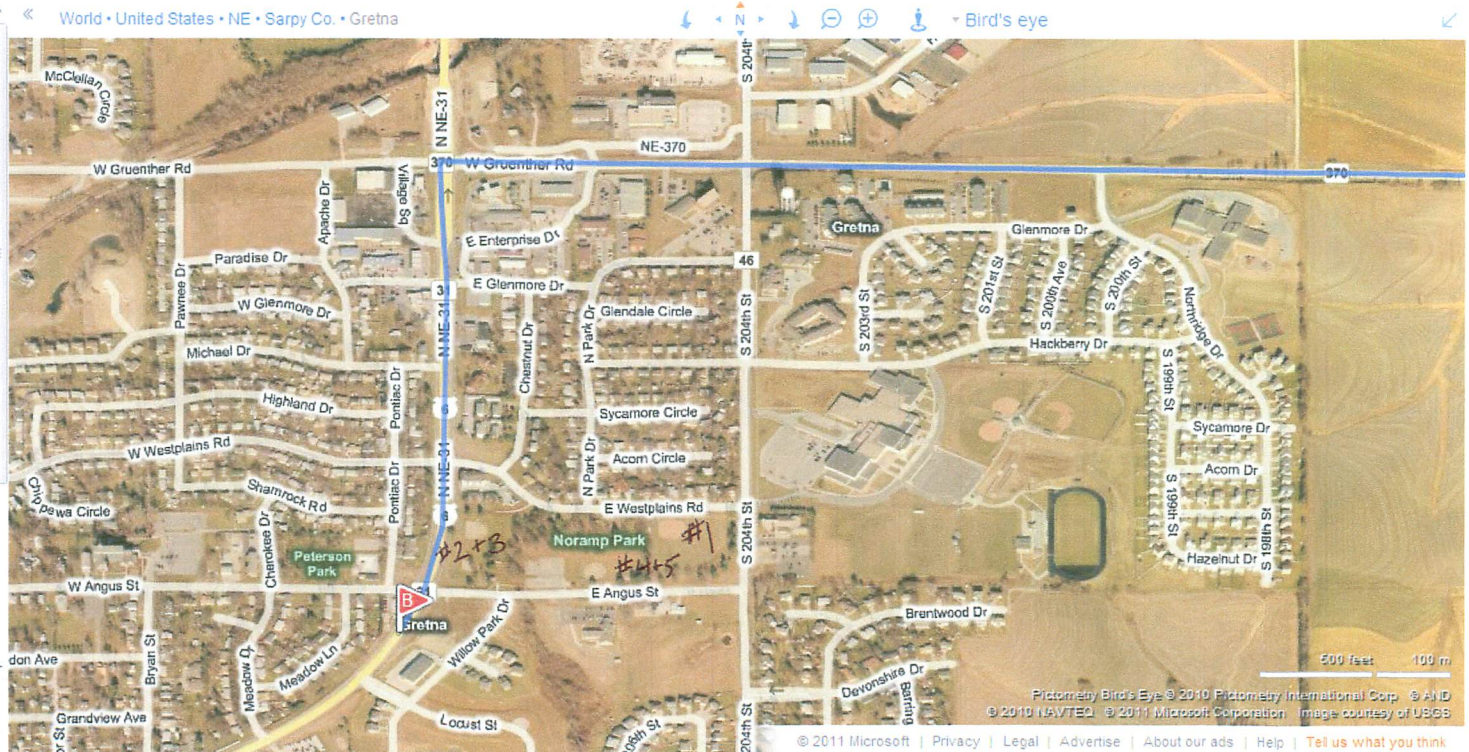


Maps

Edit route

Route: 31.9 miles, 36 min
39 min in current traffic conditions
See best route based on traffic

- Fort Calhoun, NE
- 1 Depart US-75 / N 14th St toward Monroe St 8.4 mi
- 2 Take ramp right and follow signs for I-680 West 11.6 mi
- 3 At exit 446, take ramp right for I-80 West toward Lincoln 6.8 mi
- 4 At exit 439, take ramp right for SR-370 toward Gretna 0.4 mi
- 5 Turn right onto SR-370 West 4.1 mi
- 6 Turn left onto US-6 West / SR-31 South / N NE-31 / N US-6 0.6 mi
- 7 Arrive at Gretna, NE
*The last intersection is W Angus St
If you reach Meadow Dr, you've gone too far*



Done